



ACCESS CONTROL SYSTEM



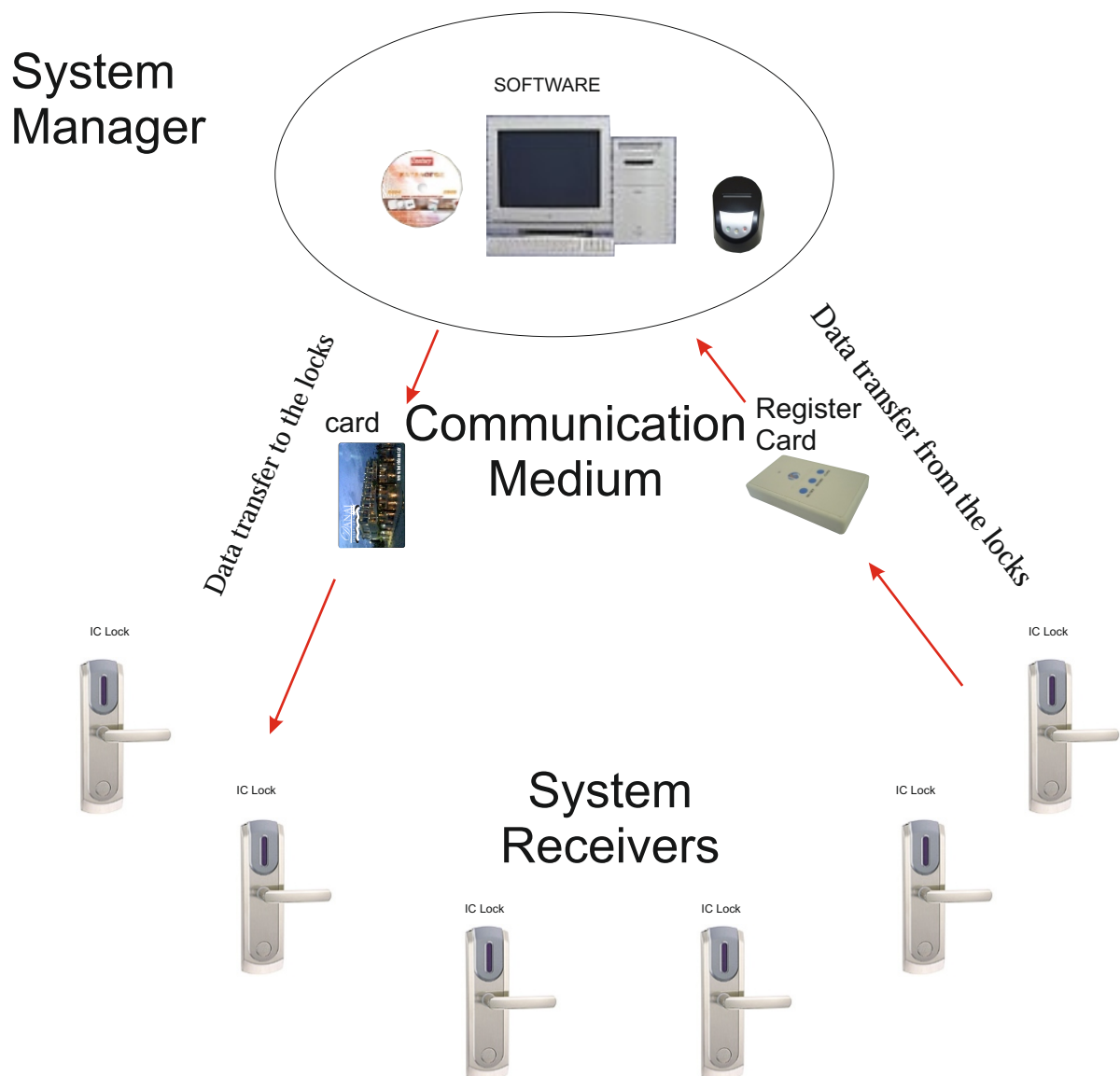
Century Control's access control System is the modern way of controlling and managing buildings, commercial spaces, hotels etc. Based on edge technologies and on top range protocols, its architecture and design characteristics come to cover, in a flexible and clever way, any modern need.

With emphasis in security, ergonomics and ease of use, provides solution in everyday or not problems.

The combination of computer technology and smart technology transforms the lock from a passive element of the installation into powerful management tool. Locks under the access control system become active parts of the system that turn the modern security needs into action. The space's security ceases to be passive, depending on good security mechanical parts, but acquires its true, active dimension because it depends on a series of logical combinations, in real time and through complex and unbreakable algorithms.

The interactive communication using sounds and visual signals makes the locks become a part of a greater information system. The ability of grouping, time limits and multiple actions give new management perspectives. Control of the whole system from a personal computer gives the ability of overall management of buildings, personnel, time and all of the elements involved into a complex system like the access control system. The processing of files/electronic archives and the statistic analysis actively contribute to the programming and functioning of the space.

ACCESS CONTROL SYSTEM SYSTEM ARCHITECTURE



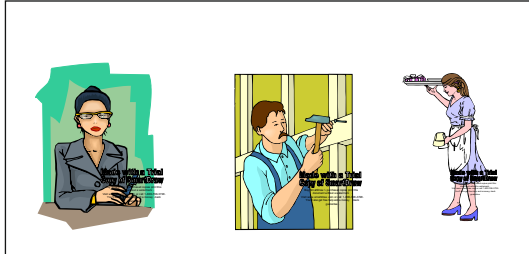
ACCESS CONTROL SYSTEM WHAT YOU CAN MANAGE

1.



Facilities Management

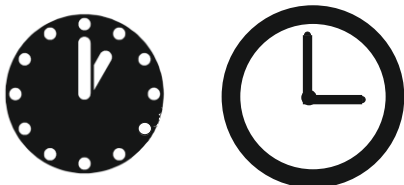
2. *Personnel Management*



Customers Management



3. *Time Management*



ACCESS CONTROL SYSTEM MANAGEMENT TOOLS

SOFTWARE



PERIPHERALS



READ-WRITE

SYSTEM REQUIREMENTS

WINDOWS 98 or newer
you need a free
RS 232 port to connect
the Read-Write

HARDWARE

IC Lock



The lock has its own internal software
that make it able to receive and execute
commands that the cards carry.

ACCESS CONTROL SYSTEM USER MANAGEMENT



SOFTWARE

CENTURY CONTROL IC LOCK

**MULTIPLE
USERS**

**FOUR
ACCESS RIGHTS
GROUPS**

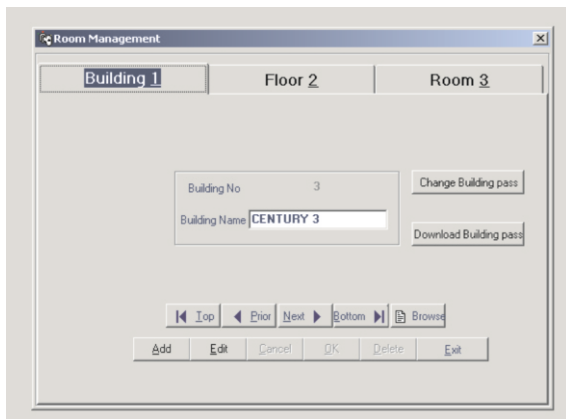
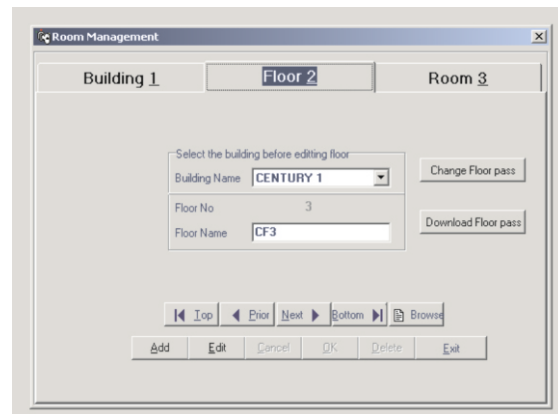
1. Generate Users
2. Issue Special Cards
(master , building , floor κλπ)
3. Create and Modify
a data base
cancel special cards
4. Manage customers' access rights

ACCESS CONTROL SYSTEM FACILITIES MANAGEMENT



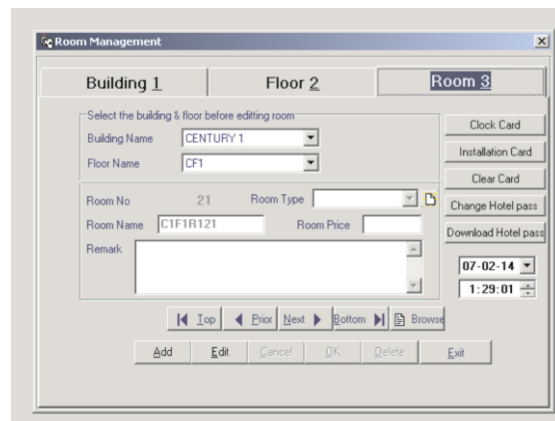
SOFTWARE

CENTURY CONTROL IC LOCK

**MULTIPLE
BUILDINGS
FLOORS
ROOMS**

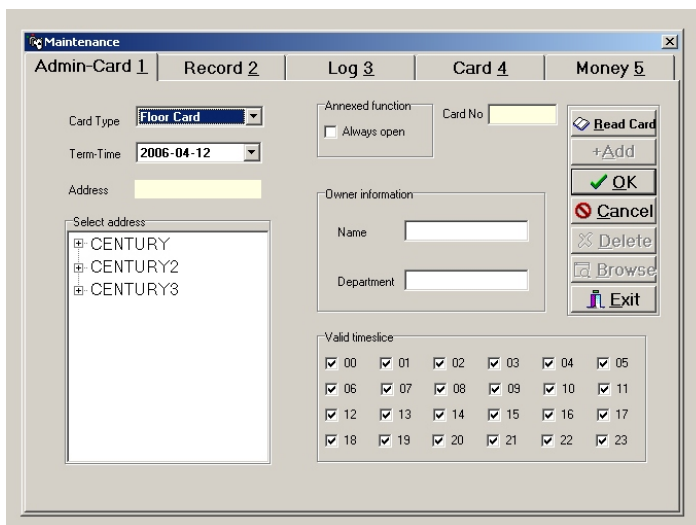
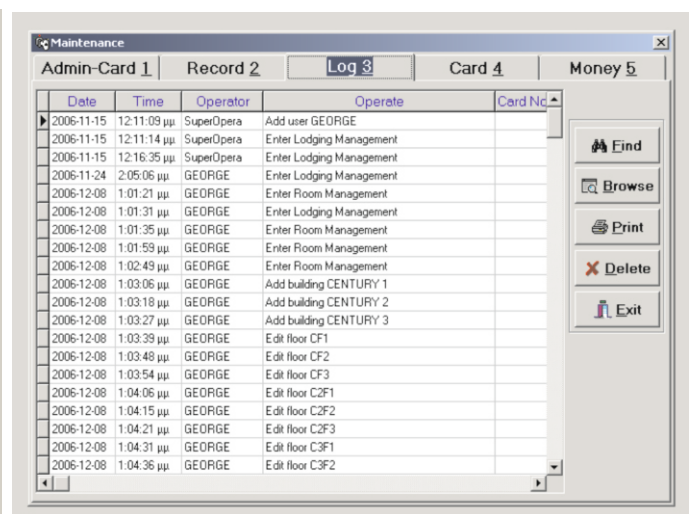
Create and Manage
Hotel data bases
Cancel special cards
Issue lock initialization cards



ACCESS CONTROL SYSTEM ACCESS RIGHTS MANAGEMENT



SOFTWARE

Date	Time	Operator	Operate	Card No.
2006-11-15	12:11:09 μμ	SuperOpera	Add user GEORGE	
2006-11-15	12:11:14 μμ	SuperOpera	Enter Lodging Management	
2006-11-15	12:16:35 μμ	SuperOpera	Enter Lodging Management	
2006-11-24	2:05:06 μμ	GEORGE	Enter Lodging Management	
2006-12-08	1:01:21 μμ	GEORGE	Enter Room Management	
2006-12-08	1:01:31 μμ	GEORGE	Enter Lodging Management	
2006-12-08	1:01:35 μμ	GEORGE	Enter Room Management	
2006-12-08	1:01:59 μμ	GEORGE	Enter Room Management	
2006-12-08	1:02:49 μμ	GEORGE	Enter Room Management	
2006-12-08	1:03:06 μμ	GEORGE	Add building CENTURY 1	
2006-12-08	1:03:18 μμ	GEORGE	Add building CENTURY 2	
2006-12-08	1:03:27 μμ	GEORGE	Add building CENTURY 3	
2006-12-08	1:03:39 μμ	GEORGE	Edit floor CF1	
2006-12-08	1:03:48 μμ	GEORGE	Edit floor CF2	
2006-12-08	1:03:54 μμ	GEORGE	Edit floor CF3	
2006-12-08	1:04:06 μμ	GEORGE	Edit floor C2F1	
2006-12-08	1:04:15 μμ	GEORGE	Edit floor C2F2	
2006-12-08	1:04:21 μμ	GEORGE	Edit floor C2F3	
2006-12-08	1:04:31 μμ	GEORGE	Edit floor C3F1	
2006-12-08	1:04:36 μμ	GEORGE	Edit floor C3F2	

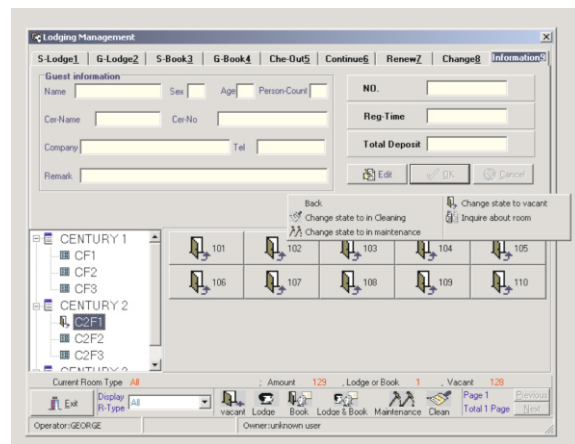
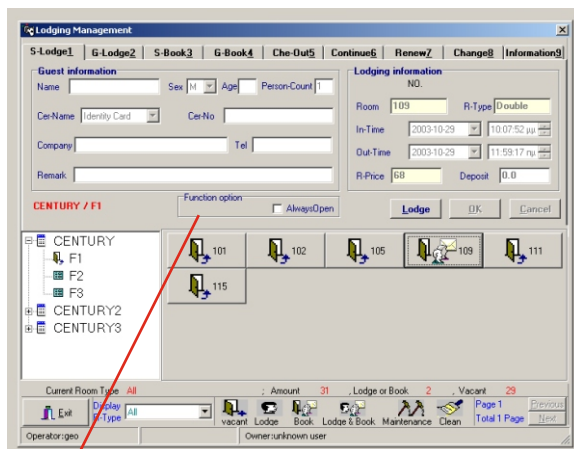
**BUILDING
FLOOR
ROOM
KEY-CARDS**

Create master cards ,
building cards
floor cards etc.
Watch action statistics
Read and modify
data stored
in locks.
Define special cards
time limits etc.

ACCESS CONTROL SYSTEM GUEST ACCESS RIGHTS



SOFTWARE



MANAGE GUEST ACCESS RIGHTS

- Issue guest cards
- Instant issue or booking for single customers or group of customers
- Cancel access rights after departure
- Cancel access rights in case of card loss
- Extend time limits
- Transfer access rights to a different room
- Write comments for specific rooms or change room status for special occasions (maintenance, cleaning etc)

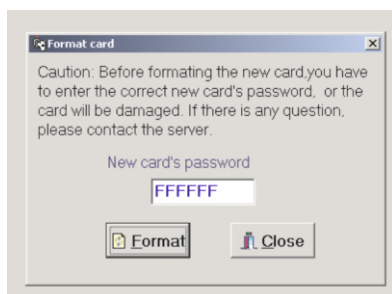


Graphic display of room status
Arithmetic display of total rooms

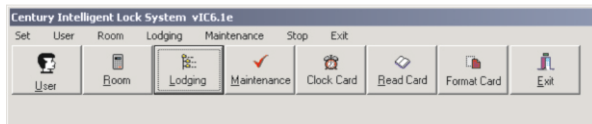
ACCESS CONTROL SYSTEM INSTALLING NEW CARDS



SOFTWARE

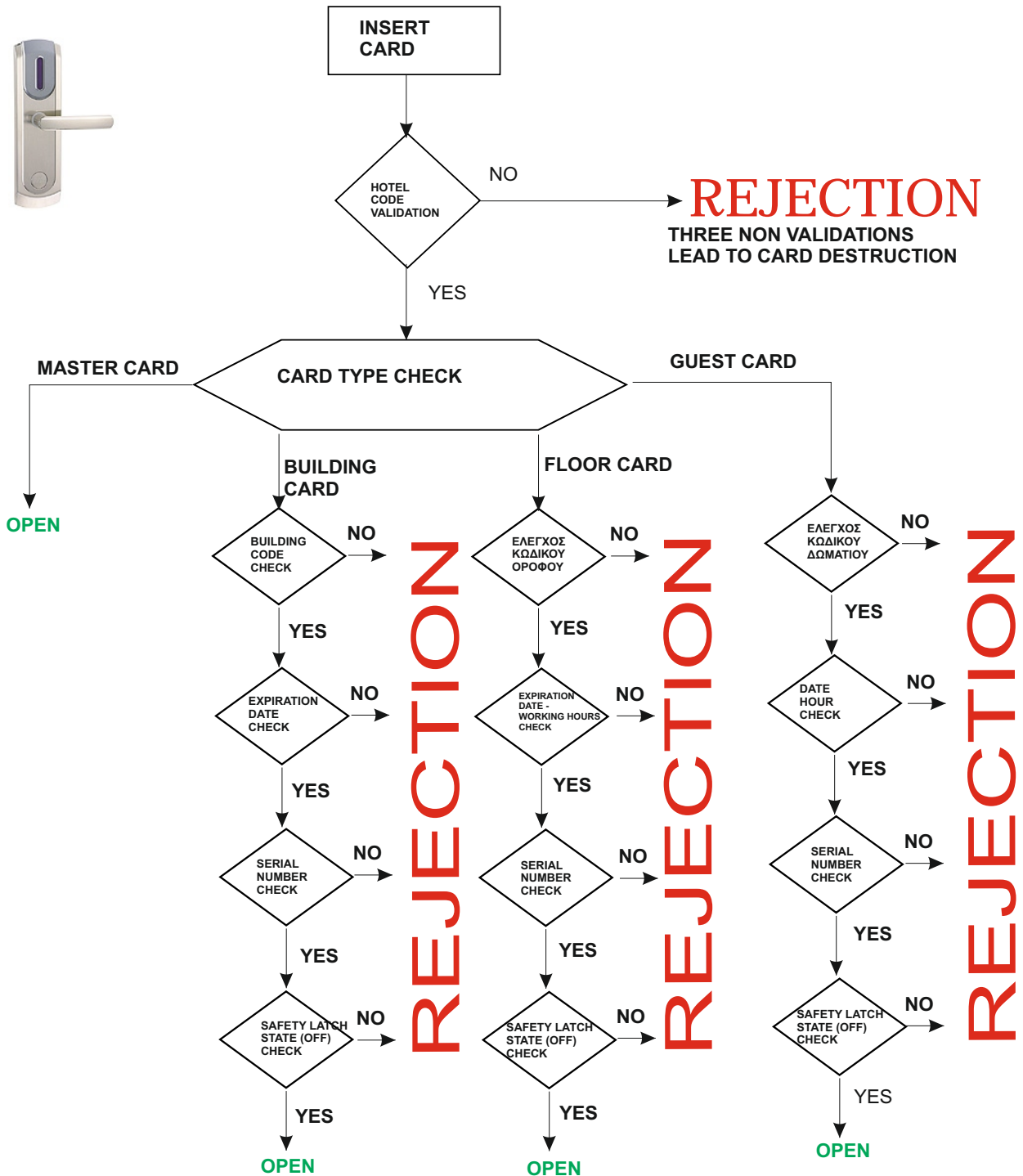


Format cards and make them part of the system



Read cards
Create time cards

ACCESS CONTROL SYSTEM LOGICAL CHECKS PROCESS



ACCESS CONTROL SYSTEM ACCESS DIAGRAM

